



Thinkmint Nigeria
A member of the
TM Group



talik

CRESCENT GARDEN ESTATE, CENTURY CITY ABUJA



7 minutes drive to Nnamdi Azikwe
International Airport and 15 minutes
drive to Central Business District Abuja





Thinkmint Nigeria
A member of the
TM Group



PROPERTY TYPES

2 Bedrooms Apartment	N25M
3 Bedrooms Apartment	N29M
3 Bedrooms Terrace Duplex	N36M
4 Bedroom Terrace Duplex	N42M
4 Bedroom Semi Detached	N60M

Initial Deposit Starting From N4,000,000



Thinkmint Nigeria
A member of the
TM Group



Apartment Features

- Standard Gym Facilities
- Security & CCTV
- 24/7 Power
- 24/7 Good water system
- Adequate Parking Space



Thinkmint Nigeria
A member of the
TM Group



CRESCENT GARDEN COURT



Thinkmint Nigeria
A member of the
TM Group





Thinkmint Nigeria
A member of the
TM Group





Thinkmint Nigeria
A member of the
TM Group





Thinkmint Nigeria
A member of the
TM Group





Thinking Projects
A member of the
TM Group





Thinkmint Nigeria
A member of the
TM Group





Thinkmint Nigeria
A member of the
TM Group





Thinkmint Nigeria
A member of the
TM Group



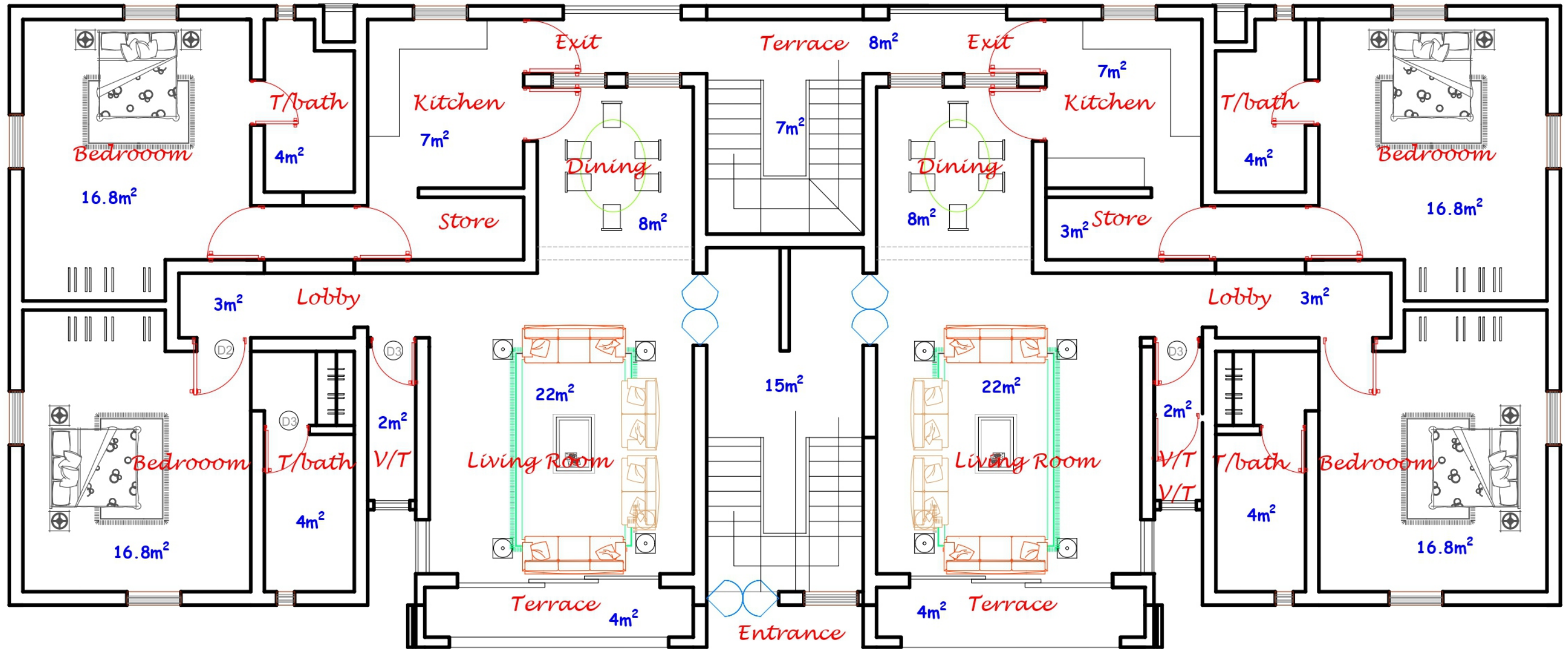
Product Pricing Crescent Garden Estate Bamishi District Abuja

Product Type	Outright Purchase	18 Months Payment Plan
2 Bedroom Apartment	23,000,000.00	25,000,000.00
3 Bedroom Apartment	25,000,000.00	28,900,000.00
3 Bedroom Terrace Duplex	33,500,000.00	37,500,000.00
4 Bedroom Terrace Duplex	36,900,000.00	45,000,000.00
4 Bedroom Semidetached	60,000,000.00	72,000,000.00

Payment Plans

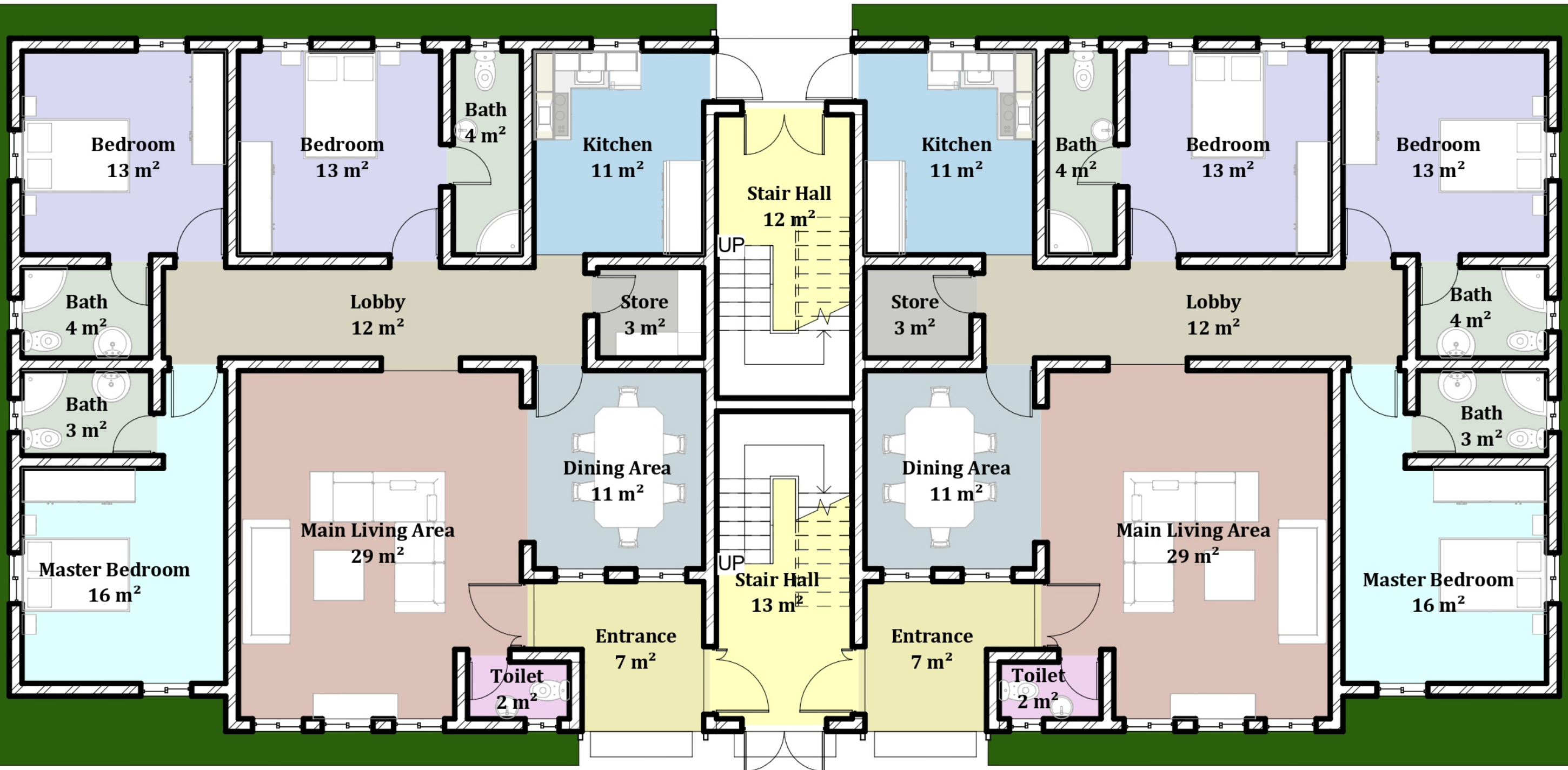
18 Months Payment Plan	% of Price	Timing of Receipt
1st payment	20%	Upon sales
2nd payment	20%	3rd Month
3rd payment	20%	6th Month
4th payment	15%	9th Month
5th payment	15%	12th Month
6th payment	10%	18th Month

2 BEDROOM BLOCK OF FLATS



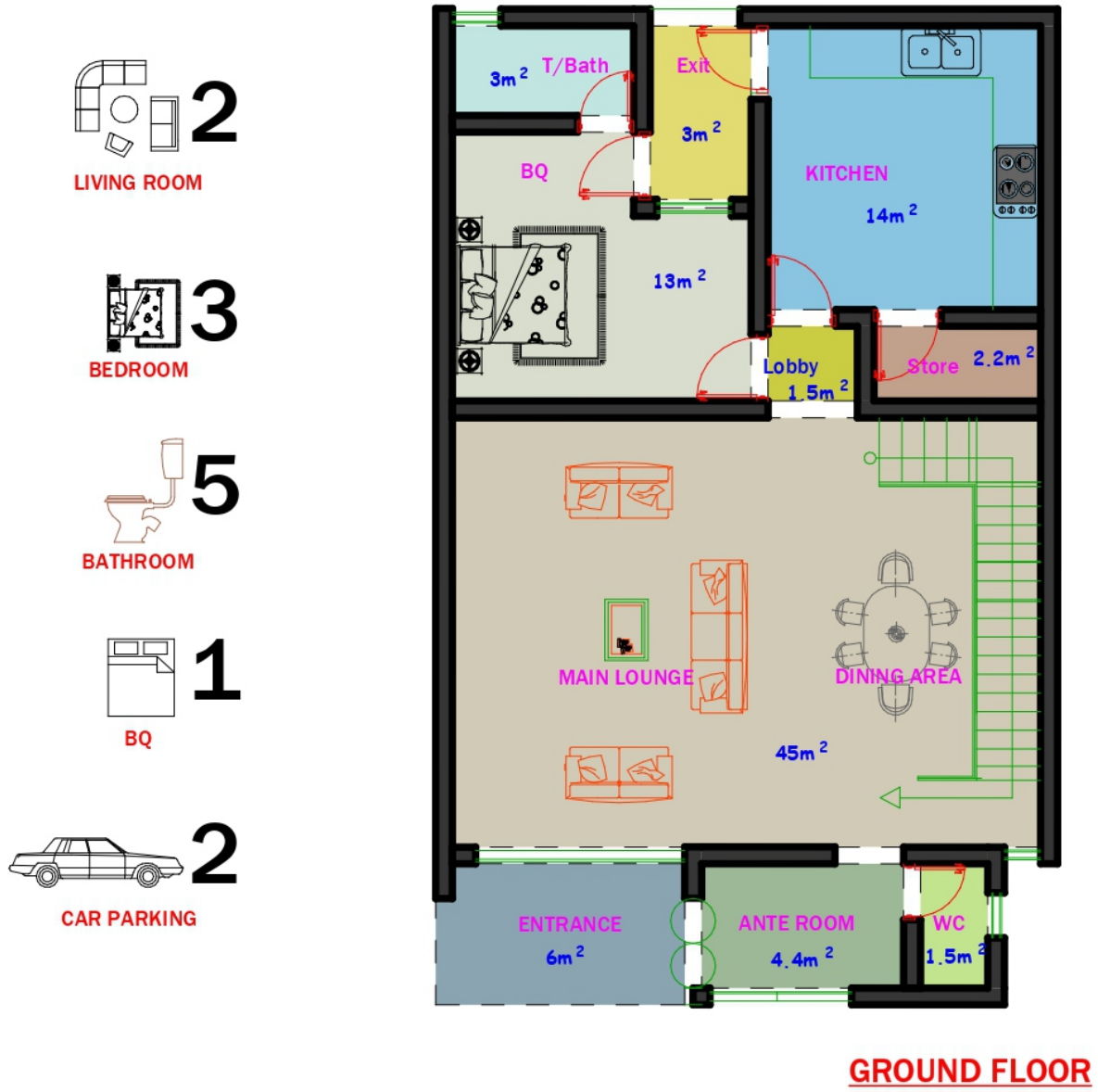
Typical Ground & First Floor Plan

3 BEDROOM BLOCK OF FLATS

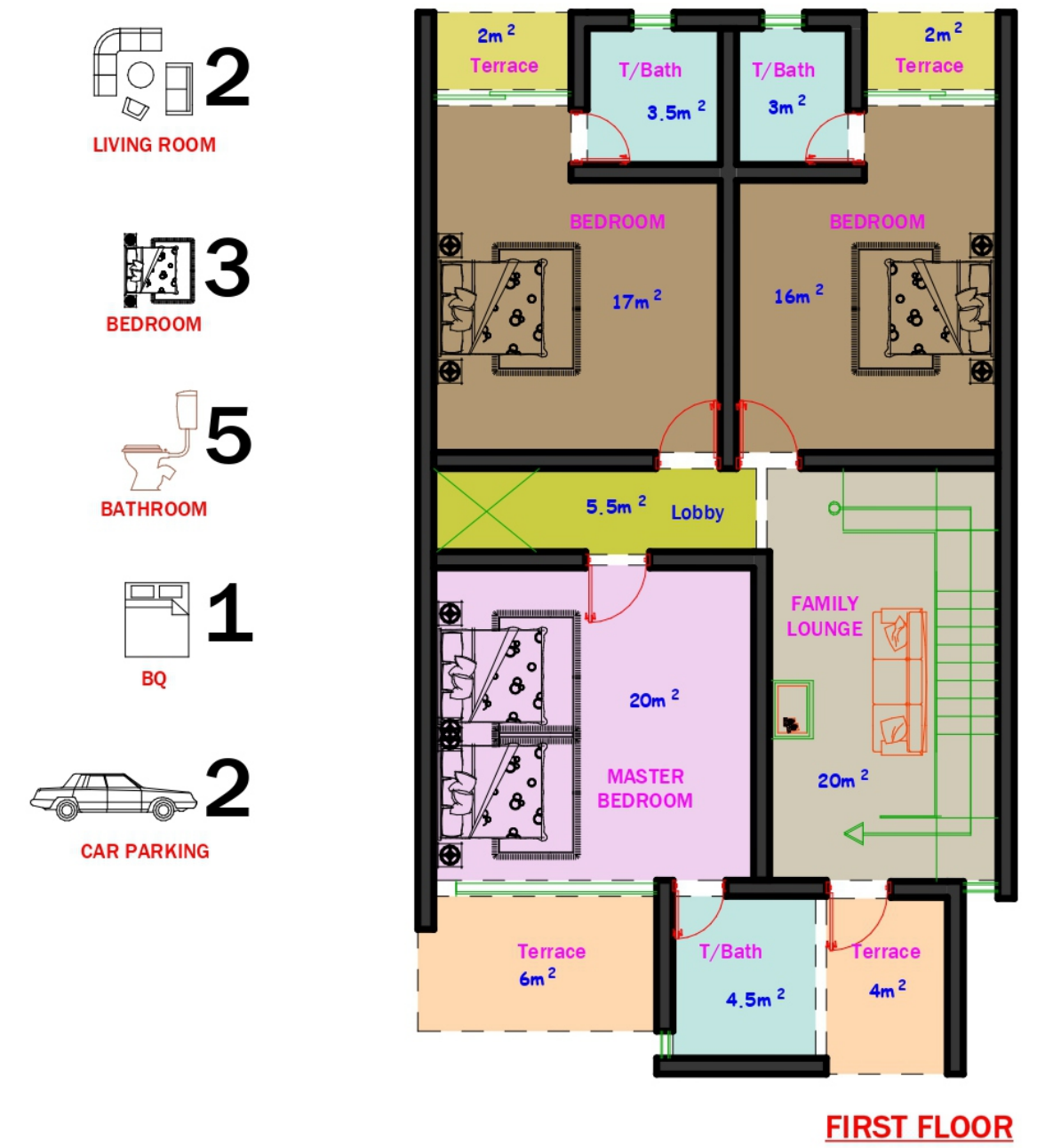


Typical Floor Plan

4 BEDROOM TERRACE DUPLEX



4 BEDROOM TERRACE DUPLEX





Thinkmint Nigeria
A member of the
TM Group



 www.thinkmint.ng/buyrealestate

 **+234 809 784 5065**